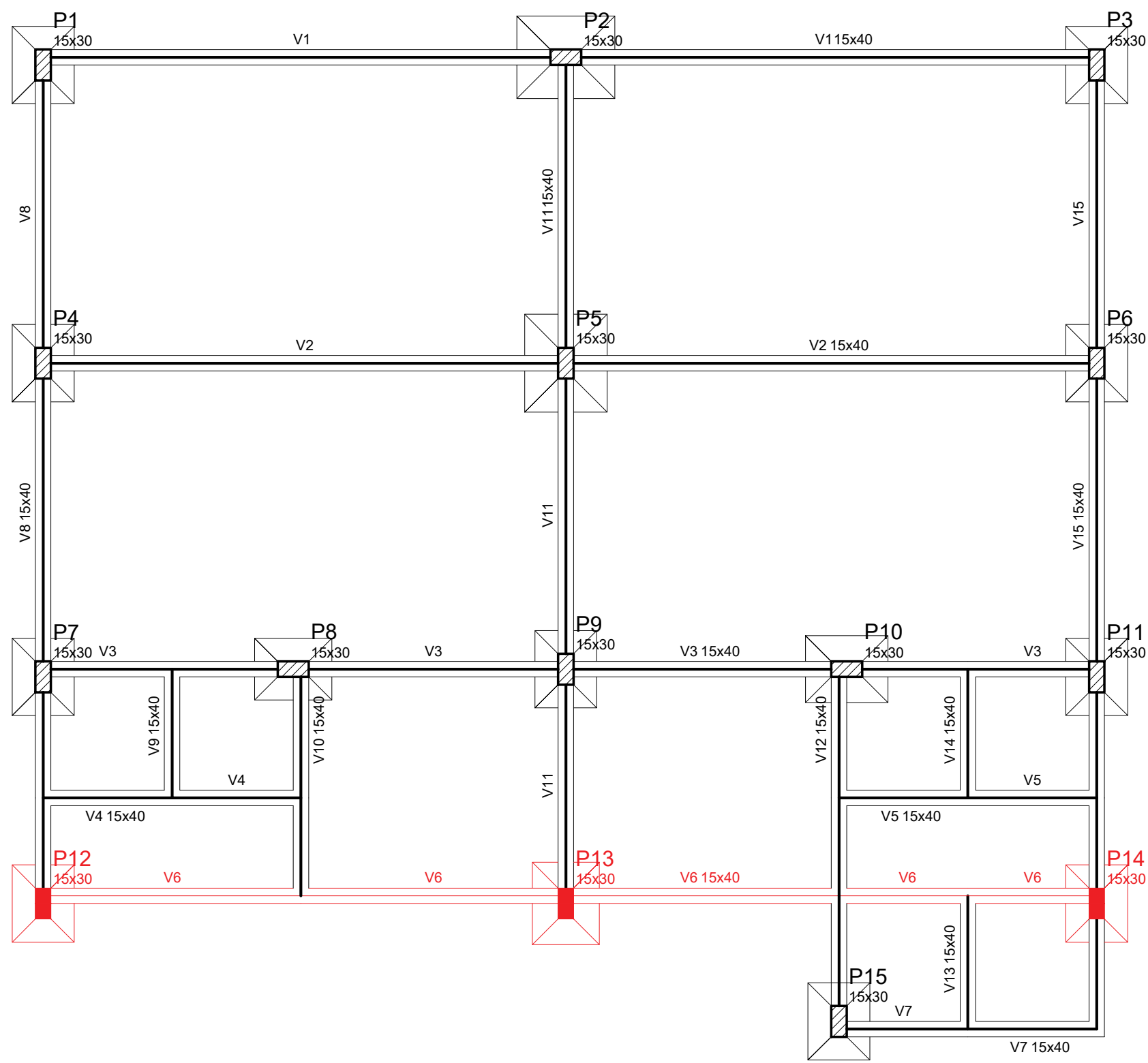


Planta de localização

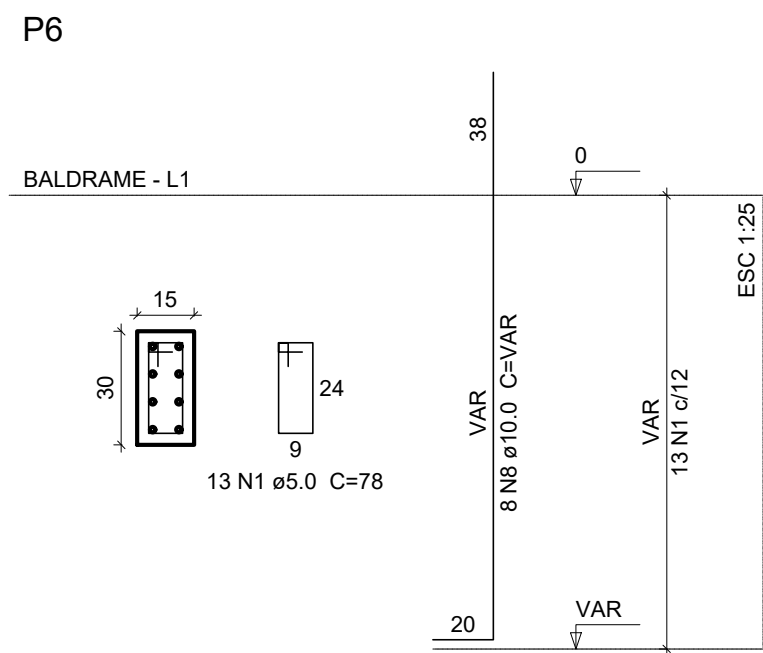
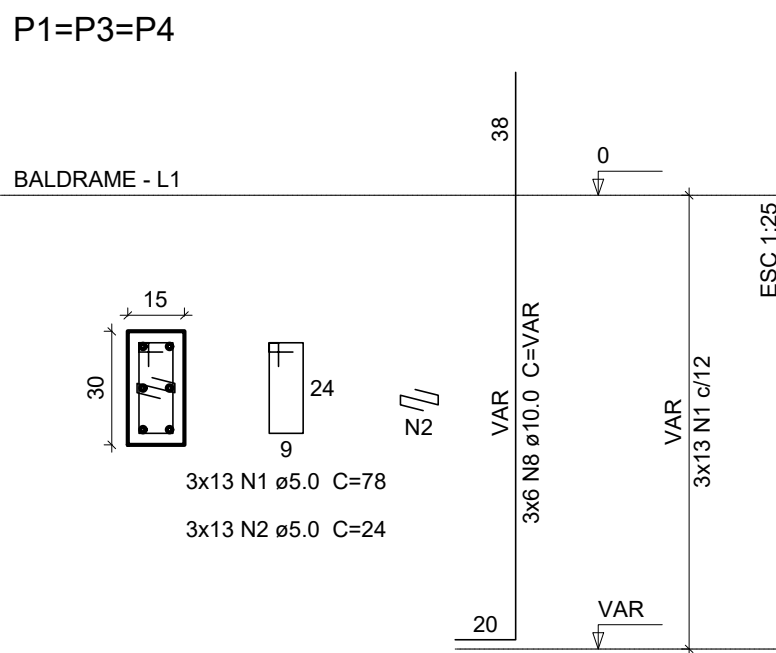
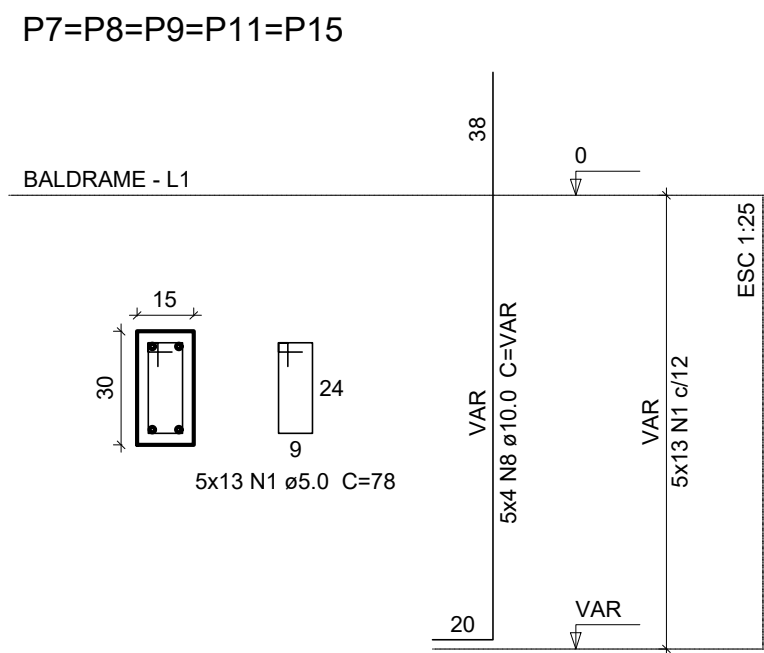


Forma do pavimento Baldrame

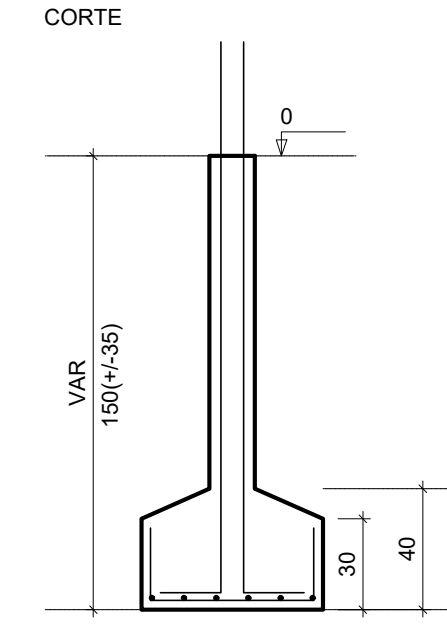
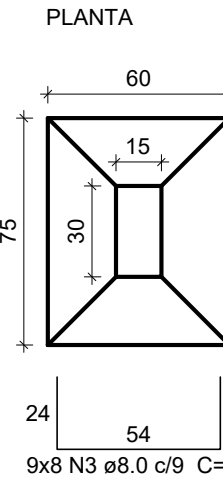
| Vigas | | | |
|-------|------------|---------------|------------|
| Nome | Seção (cm) | Elevação (cm) | Nível (cm) |
| V1 | 15x40 | 0 | 0 |
| V2 | 15x40 | 0 | 0 |
| V3 | 15x40 | 0 | 0 |
| V4 | 15x40 | 0 | 0 |
| V5 | 15x40 | 0 | 0 |
| V6 | 15x40 | 0 | 0 |
| V7 | 15x40 | 0 | 0 |
| V8 | 15x40 | 0 | 0 |
| V9 | 15x40 | 0 | 0 |
| V10 | 15x40 | 0 | 0 |
| V11 | 15x40 | 0 | 0 |
| V12 | 15x40 | 0 | 0 |
| V13 | 15x40 | 0 | 0 |
| V14 | 15x40 | 0 | 0 |
| V15 | 15x40 | 0 | 0 |

| Características dos materiais | | |
|-------------------------------|---------------|--|
| fck (kgf/cm²) | Ecs (kgf/cm²) | |
| 250 | 238000 | |

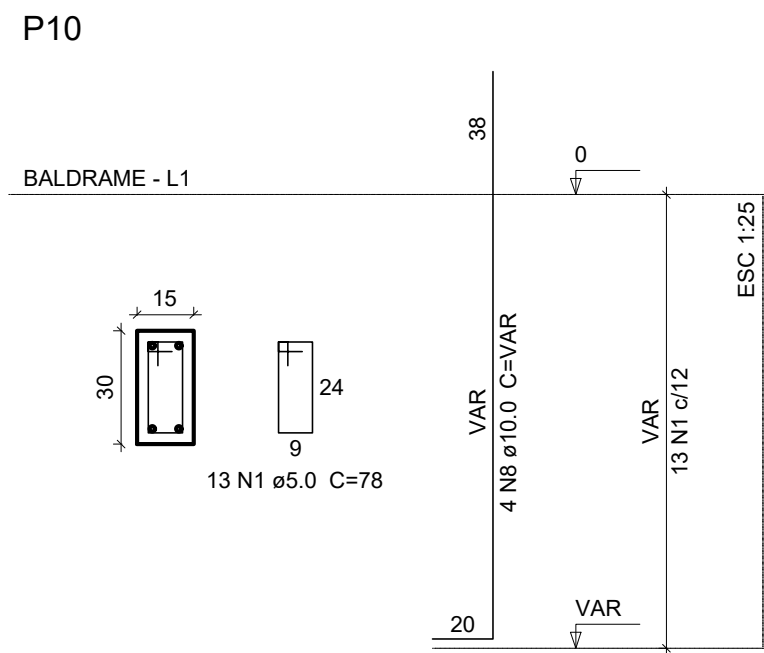
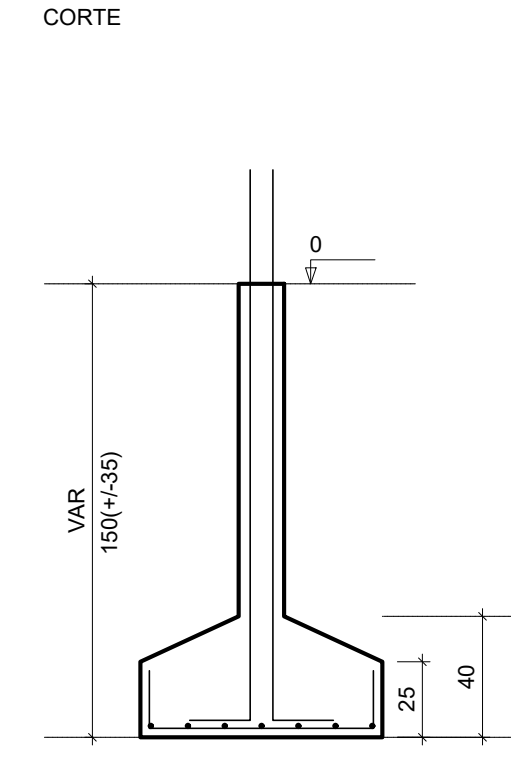
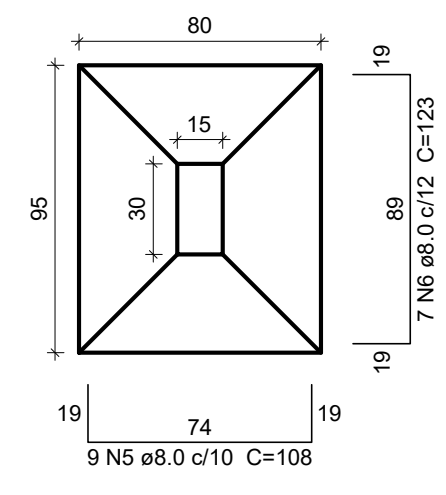
| Pilares | | | |
|---------|------------|---------------|------------|
| Nome | Seção (cm) | Elevação (cm) | Nível (cm) |
| P1 | 15 x 30 | 0 | 0 |
| P2 | 15 x 30 | 0 | 0 |
| P3 | 15 x 30 | 0 | 0 |
| P4 | 15 x 30 | 0 | 0 |
| P5 | 15 x 30 | 0 | 0 |
| P6 | 15 x 30 | 0 | 0 |
| P7 | 15 x 30 | 0 | 0 |
| P8 | 15 x 30 | 0 | 0 |
| P9 | 15 x 30 | 0 | 0 |
| P10 | 15 x 30 | 0 | 0 |
| P11 | 15 x 30 | 0 | 0 |
| P12 | 15 x 30 | 0 | 0 |
| P13 | 15 x 30 | 0 | 0 |
| P14 | 15 x 30 | 0 | 0 |
| P15 | 15 x 30 | 0 | 0 |
| P16 | 15 x 30 | 0 | 0 |



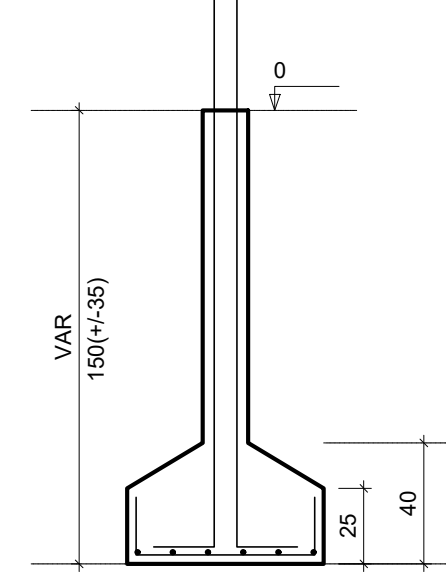
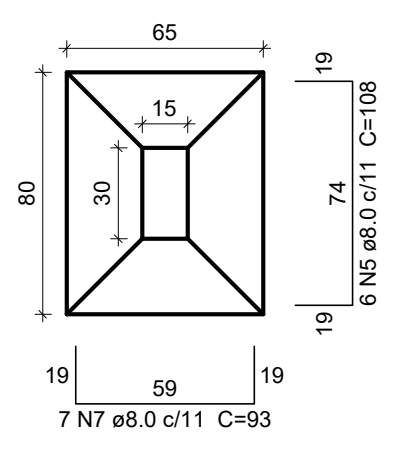
S1=S3=S4=S6=S7=S8=S9=S11=S15



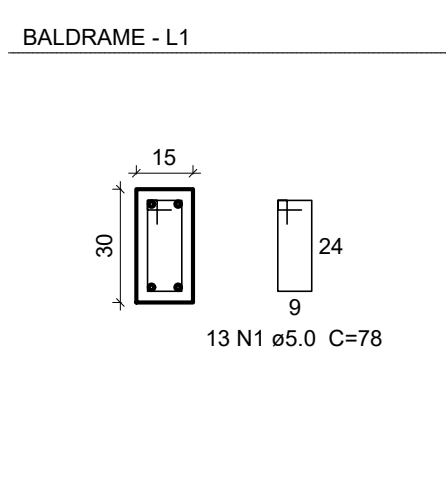
S2=S5



S10



P2=P5



Relação do aço

| 2xS5 | S10 | | | S13 | |
|------|-----|------|-----|--------------|-----------------|
| AÇO | N | DIAM | Q | UNIT (cm) | C.TOTAL (cm) |
| CA60 | 1 | 5.0 | 156 | 78 | 12168 |
| | 2 | 5.0 | 39 | 24 | 936 |
| CA50 | 3 | 8.0 | 72 | 98 | 7056 |
| | 4 | 8.0 | 54 | 113 | 6102 |
| | 5 | 8.0 | 24 | 108 | 2592 |
| | 6 | 8.0 | 14 | 123 | 1722 |
| | 7 | 8.0 | 7 | 93 | 651 |
| | 8 | 10.0 | 58 | VAR | VAR |

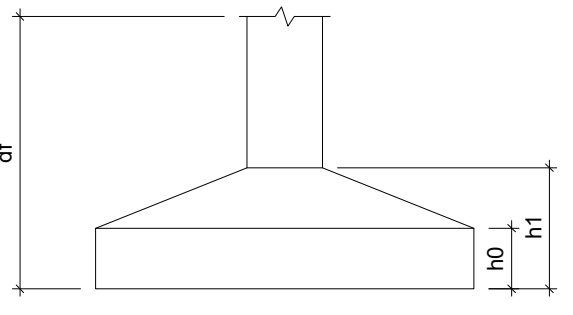
Resumo do aço

| ÁÇO | DIAM | C.TOTAL (m) | PESO (kg) |
|------------|-------|-------------|-----------|
| CA50 | 8.0 | 181.3 | 71.7 |
| | 10.0 | 118.9 | 73.4 |
| CA60 | 5.0 | 131.1 | 20.2 |
| PESO TOTAL | | | |
| CA50 | 145.1 | | |
| CA60 | 20.2 | | |

Vol. de concreto total (C-25) = 2.83 m³
Área de forma total = 25.96 m²

Os pilares 12, 13 e 14 e suas respectivas sapatas são existentes
Já foram descontados aço, concreto e forma

| Fundação | | | | |
|-------------|-------------|--------------|--------------|---------|
| Lado B (cm) | Lado H (cm) | h0 / ha (cm) | h1 / hb (cm) | df (cm) |
| 60 | 75 | 30 | 40 | 150 |
| 80 | 95 | 25 | 40 | 150 |
| 60 | 75 | 30 | 40 | 150 |
| 60 | 75 | 30 | 40 | 150 |
| 80 | 95 | 25 | 40 | 150 |
| 60 | 75 | 30 | 40 | 150 |
| 60 | 75 | 30 | 40 | 150 |
| 60 | 75 | 30 | 40 | 150 |
| 65 | 80 | 25 | 40 | 150 |
| 60 | 75 | 30 | 40 | 150 |
| 60 | 75 | 30 | 40 | 150 |
| 60 | 75 | 30 | 40 | 150 |
| 60 | 75 | 30 | 40 | 150 |
| 60 | 75 | 30 | 40 | 150 |
| 60 | 75 | 30 | 40 | 150 |
| 0 | 0 | 0 | 0 | 150 |



Legenda

| | |
|---|----------------------------|
| ■ | Pilar que morre |
| ▨ | Pilar que passa |
| □ | Pilar que nasce |
| ▩ | Pilar com mudança de seção |
| ■ | Pilar existente |

QUARTOS



PREFEITURA MUNICIPAL DE GUAÇUÍ-ES

Assunto: PROJETO ESTRUTURAL PARA REFORMA E AMPLIAÇÃO DO ABRIGO INSTITUCIONAL SILVIA RIVA DO CARMO (CASA LAR)

Rua Leda de Souza Campos - Guaçu-ES

Data: Abril 2023

Escalas: Indicadas

Responsável Técnico: Bianca Tiradentes dos Santos Lima

Engenheira Civil - CREA ES-043573/D

Prancha: 01/05